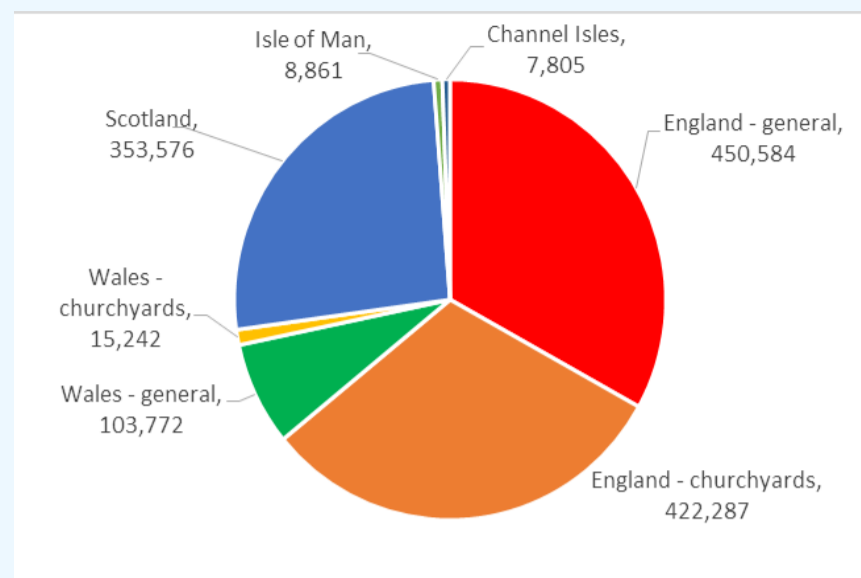


BLS Database

Records continue to be added to the database every week, and it now contains nearly 1.4m records for 55,000 locations, plus nearly 0.5m hectad records from the Mapping Scheme.

	General	Churchyards	Total
England	456,763	429,315	886,078
Scotland			364,633
Wales	105,138	15,197	120,335
Isle of Man	7,155	1,709	8,864
Channel Isles			7,805
	569,056	446,221	1,387,715
Mapping scheme (2009)			
- Britain			421,605
- Channel Isles			3,458
- Ireland			72,202
			497,265
			1,884,980



43.6% of the records for England and Wales are for churchyards.

Coverage

This map shows the number of species for which we have records in each 5km square (therefore excluding the Mapping Scheme). There are still plenty of gaps to fill.

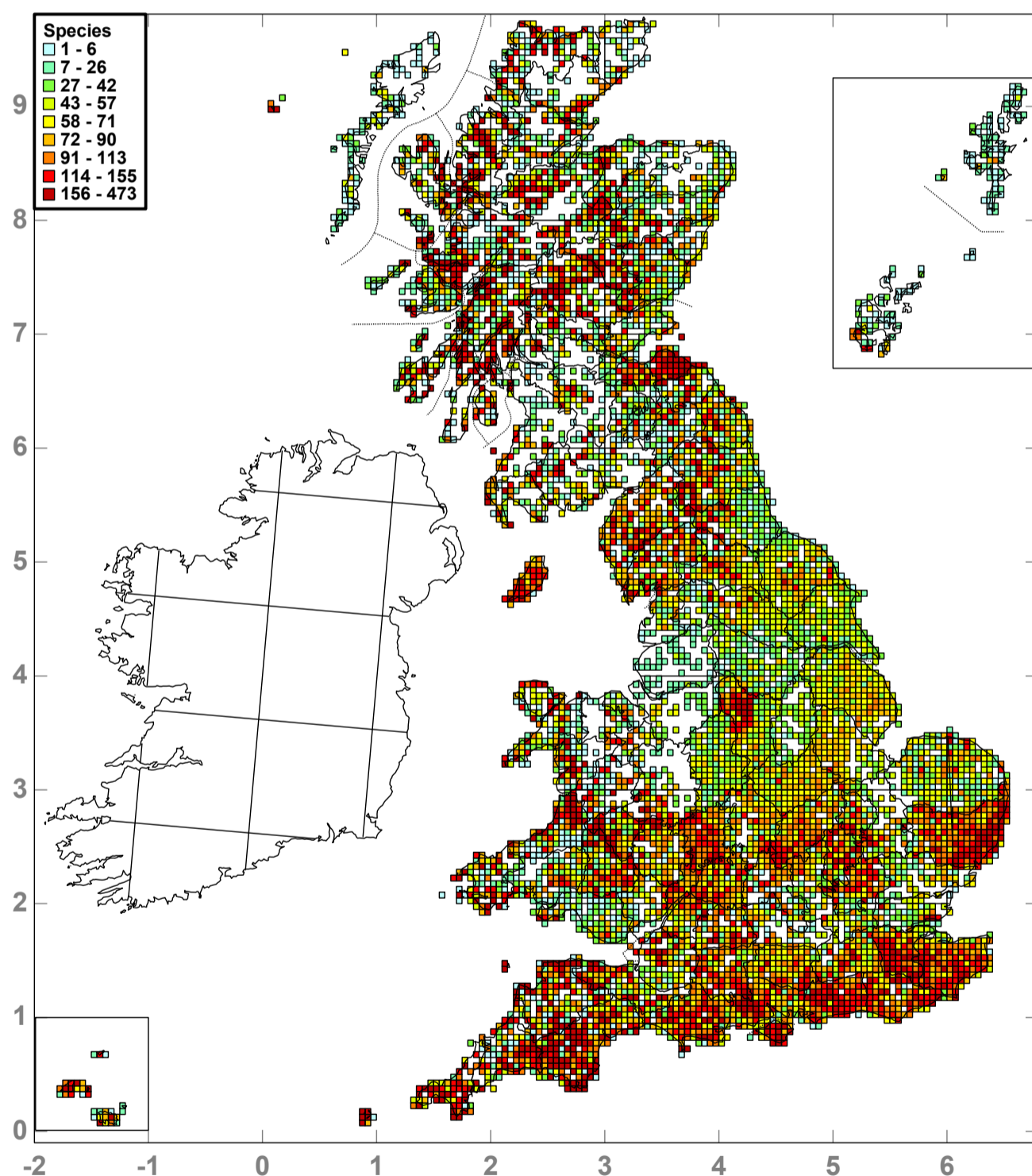
Requests for Data

If you need details of the records we hold for any particular site, grid square or species please ask and we will email them to you:

Janet Simkin (England and Wales)

Brian Coppins (Scotland)

Mark Seaward (Mapping Scheme)



Maps on the website

Distribution maps for all British species are now on the BLS Website, in the Resources section. These are derived from the database and include records from the Mapping Scheme up to 2009. They can be updated as soon as new records are added to the database, and so are much more up to date than the NBN Gateway.

Please report any errors so we can correct them.

