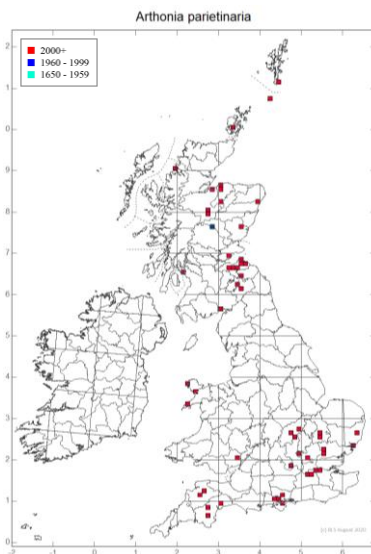
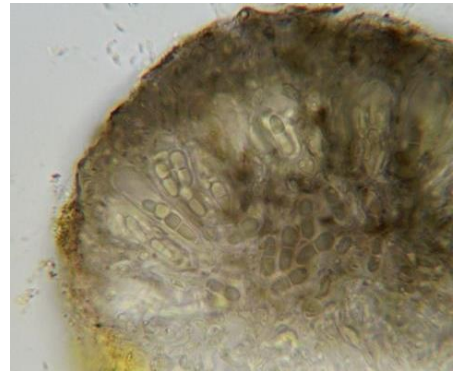
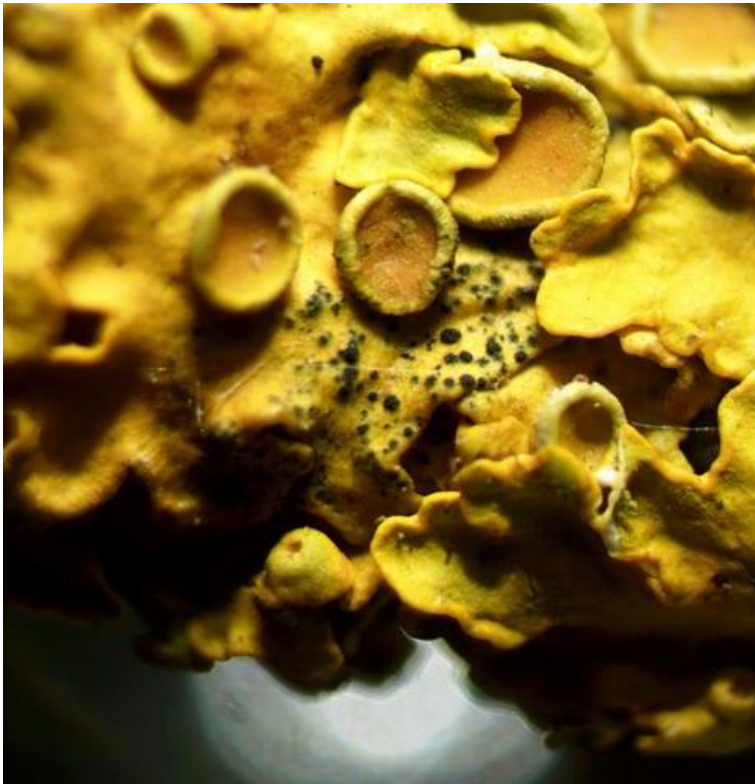


Arthonia parietinaria



Identification: Visible as variably-sized black dots, mainly on the thallus, of *Xanthoria parietina*. The host can show very little damage. Asci relatively broad. Ascospores two-celled with one cell larger than the other. Spores are surrounded by a transparent gelatinous sheath.

Similar species: *Arthonia parietinaria* is the only fungus that produces apothecia with two-celled ascospores on *Xanthoria parietina*.

Habitat: Parasitic on thalli and apothecia of *Xanthoria parietina*.

Distribution: This is a recently described species. It is probably under-recorded.

References: <http://fungi.myspecies.info/all-fungi/arthonia-parietinaria>

Fleischhacker *et al* (2016) *Fungal Biology* **120**: 1341-1353