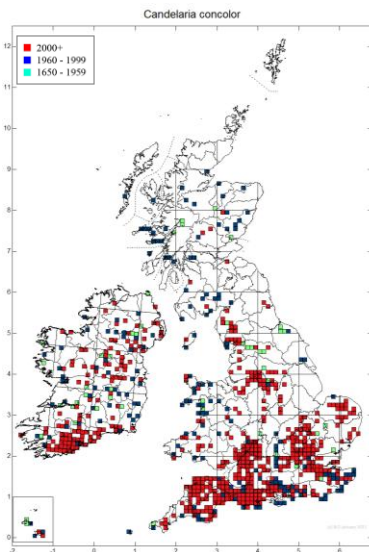
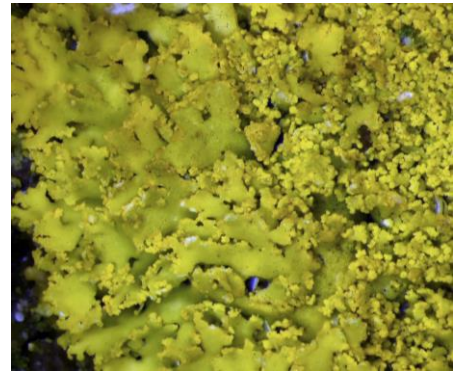


Candelaria concolor



Identification: Thallus greenish-yellow to lemon yellow forming small, discrete, roughly circular cushions less than 1 cm across. These may coalesce or appear as scattered fragments. Minute lobes are up to 1 mm long, thin and with toothed margins. The edges and occasionally the whole thallus may be coarsely granular. Apothecia are rare, up to 1 mm wide, dirty yellow with a roughened margin.

Chemistry: K- (sometimes dirty brown).

Similar species: *Xanthoria ulophyllodes* and *X. candelaria* are similar but are K+ purple. *Candelaria pacifica* has a cobweb-like lower surface and few, if any, rhizines.

Habitat: On well lit to lightly shaded basic barked trees and on fences. Usually in nutrient-rich situations. Exceptionally on rocks.

Distribution: Throughout Britain and Ireland but more common in the south.