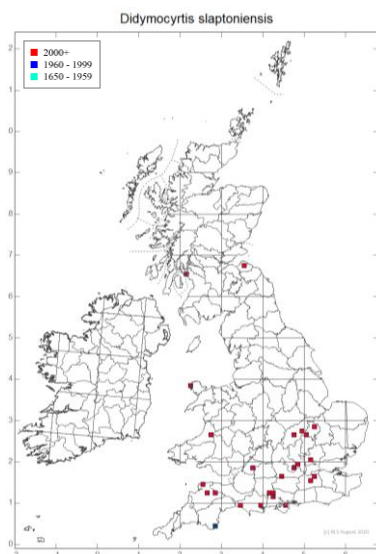
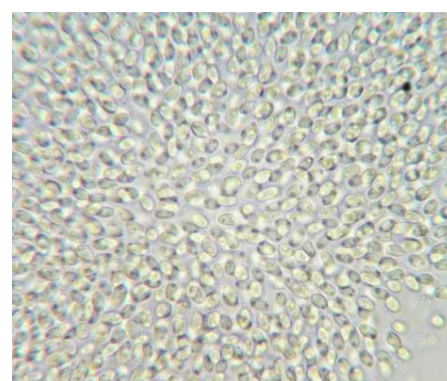
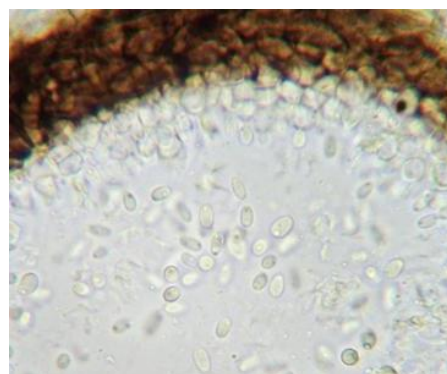
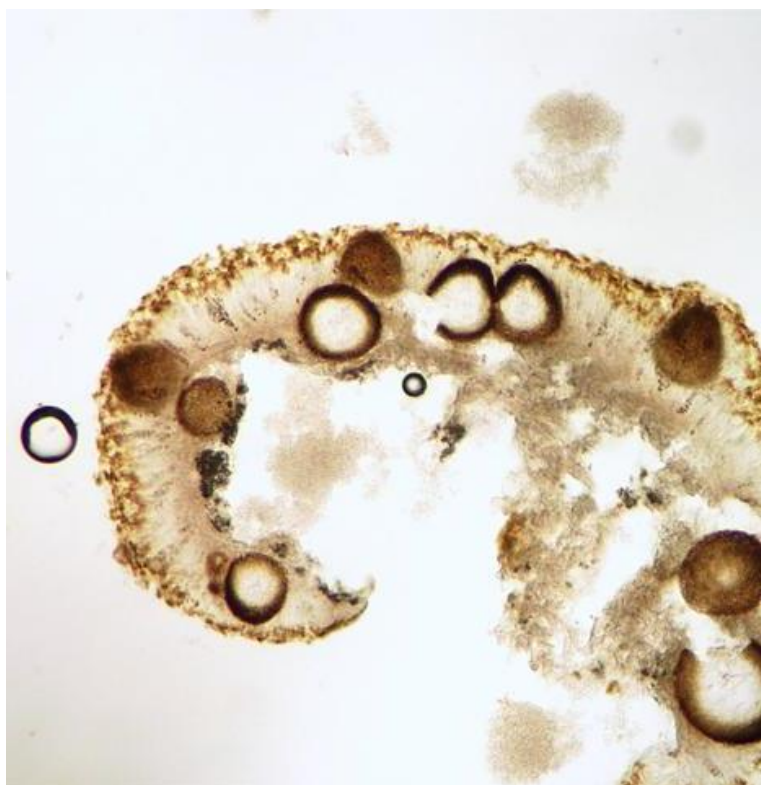


## *Didymocyrtis slaptoniensis* anamorph



**Identification:** Areas of *Xanthoria parietina* infected with this fungus are usually tinged a distinctive reddish colour. The pycnidia of *Didymocyrtis slaptoniensis* can be found on the thallus or, more rarely, on the apothecia. The spores are colourless and single-celled. Perithecia with brown, two-celled spores also occur.

**Similar species:** *Pyrenochaeta xanthoriae* also forms pycnidia on *X. parietina* and has colourless, single-celled spores but this species has dark hair-like structures (setae) on the top of its pycnidia. There appears to be a second form of *Didymocyrtis* on *Xanthoria parietina* in the UK. This species is often recorded as *Didymocyrtis epiphyscia* s. lat. It is only known in its pycnidial form. Spore sizes should be given when making records of *Didymocyrtis slaptoniensis*.

**Habitat:** On thallus and apothecia of *Xanthoria parietina*.

**Distribution:** Southern England with scattered records elsewhere.

**References:** <http://fungi.myspecies.info/all-fungi/didymocyrtis-slaptoniensis>

Ertz *et al* (2015) *Fungal Diversity* **74**: 53-89