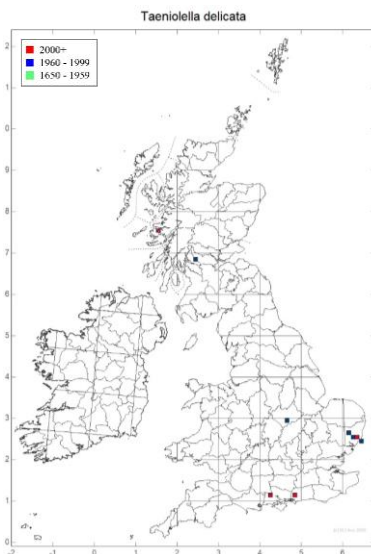
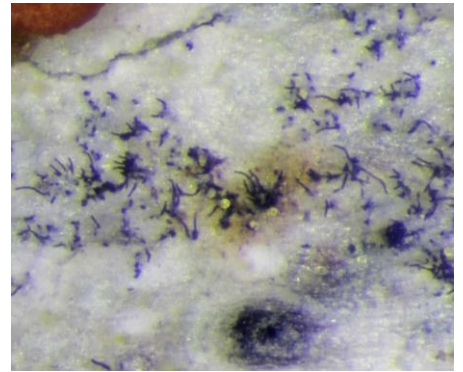
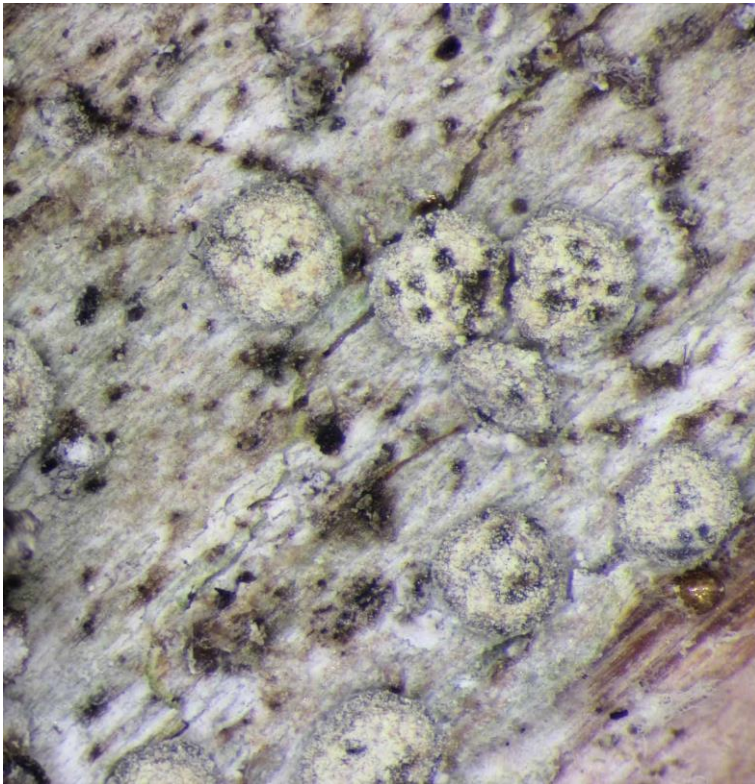


# Taeniolella delicata



**Identification:** *Taeniolella delicata* attacks the thalli and apothecia of a broad range of mainly crustose lichens. The dark conidia are formed in chains that do not separate easily. They have smooth walls and are only slightly constricted at the cross-walls. The chains develop on dark hyphae that branch sparingly near the host surface.

**Similar species:** These features, plus the large amount of damage normally caused to the host, help to separate *T. delicata* from other similar fungi.

**Habitat:** Pathogenic on a broad range of mainly crustose lichens causing extensive damage.

**Distribution:** Possibly much more common and widely spread than the present map suggests.

**References:** <http://fungi.myspecies.info/all-fungi/taeniolella-delicata>

Heuchert *et al* (2018) *Fungal Systematics and Evolution* 2: 69-261

Photos Paul Cannon Text Fay Newbery

© British Lichen Society